

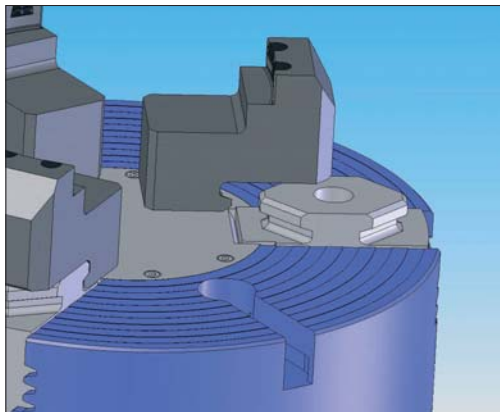
**PATENT PENDING**

# Quick change Jaw system VC

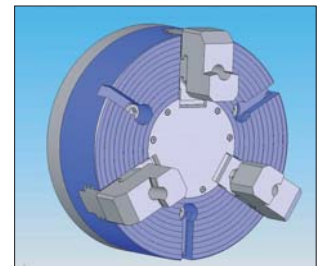
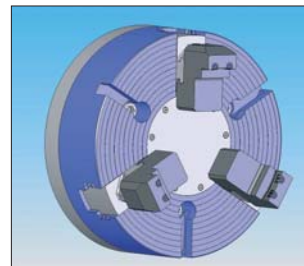


## AWARD 2005

Because of this new system FORKARDT DEUTSCHLAND has been given the turntec AWARD 2005.

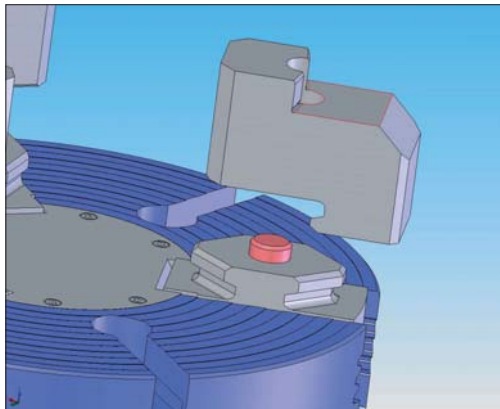


## V-Change



### Features

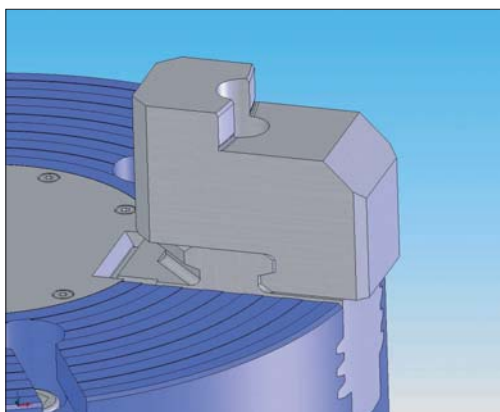
- Top jaws to be used for O. D. and I. D. clamping
- Jaw change system easily to be realised automatically (patent pending)
- Best repeatability (0,02) even under high clamping pressures
- Jaw change within approx. 5 seconds (ordinary systems 5-10 minutes)
- Highly efficient
- No additional base jaw necessary



### Function

The VC base jaw features a 90 degree special shape into which the top jaw will be placed.

The jaw itself is locked via a locking pin which will be operated either manually (wrench) or automatically via a simple device in combination with the chuck's jaw stroke.



FORKARDT DEUTSCHLAND GMBH  
Heinrich-Hertz-Str. 7  
D-40699 Erkrath

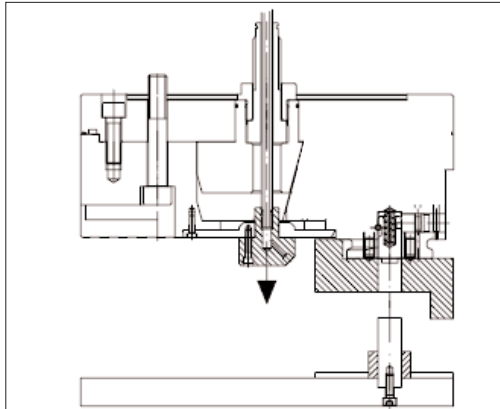
Tel: 02 11-25 06-0  
Fax: 02 11-25 06-2 21  
eMail: info@forkardt.com

• Mehr Info unter:

[www.forkardt.com](http://www.forkardt.com)

**PATENT PENDING**

# Quick change Jaw system VC



1

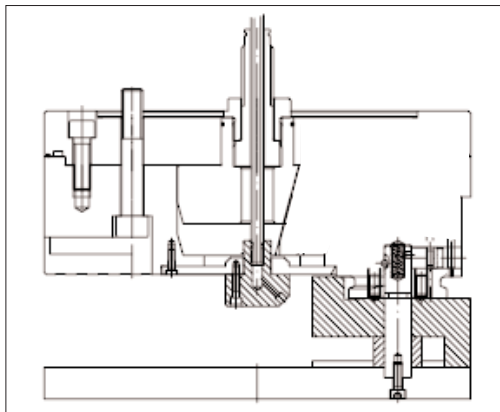
## Automatic jaw change

In order to change jaws automatically in the VC-system one needs two identical **simple** devices for O. D. and I. D. clamping.

These devices consist of a base plate with 3 bolts and 6 sideway guidance strips (3 Jaw Chuck).

The positioning bore in the top jaws is a through-hole, thus picking up the device's bolts.

For certain shapes of top jaws additional support elements can be added to the device.



2

## Function of jaw change

Example: Vertical spindle lathe with autoloading component facility

### Step 1:

The first device is yet unloaded and is to be positioned at the loading station.

### Step 2:

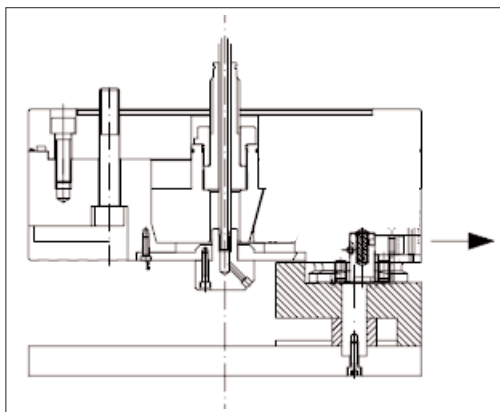
The main spindle approaches the device until the bolts match the jaws' bores and the locking pin is pressed.

### Step 3:

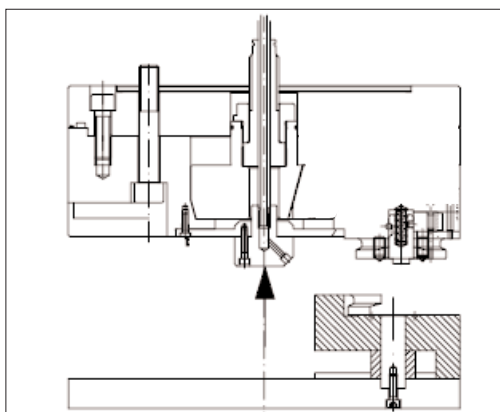
Chuck jaws open or close (O. D. or I. D. clamping)

### Step 4:

The top jaws are released – main spindle drives back.



3



4

The second device (with new top tooling) is brought into position

